

Extra Heavy-Duty Kontrol-Karriers

Extra Heavy-Duty Kontrol-Karriers - 2,000 Lb. Capacity

- 360° drum tilt control in both directions
- Hand operated geared tilt with fully enclosed gear box
- Quick, sure below-hook drum handling by one person
- Save time, reduce waste, improve productivity
- Controlled high-level pouring

MADE
IN
USA

Manual drum tilt is controlled with a 12' pull chain loop hanging 6' below the chain wheel. There is enough resistance in the enclosed gear box to automatically stop and hold the drum tilt angle. Hand wheel tilt control option is also available.

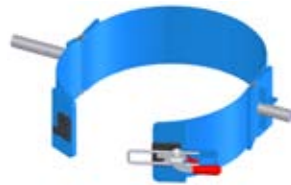
Extra-heavy-duty construction with steel tube framework, large shafts and bearings offer long life in tough service. An oil filled, worm gear speed reducer provides 60:1 gear reduction for fine control when tipping heavy drums.

Full Drum Capacity 2,000 Lb., Half-full* drum capacity 1,000 Lb.

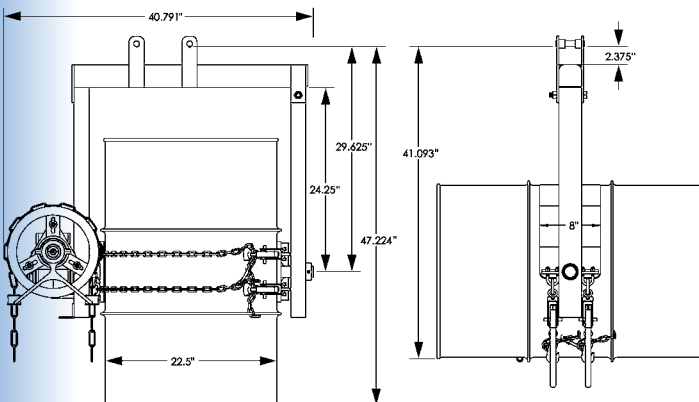
The drum holder of Model 185A-GR has an 8" wide metal band and two load binders to secure your 22.5" diameter steel drum.



The 3-Piece Drum Holders on models 185G-GR and 185GM-GR have three 8" wide hinged metal bands, and a clamp in the front. They are sized for a standard 55-gallon 22.5" diameter steel drum.



Dimensions



NOTE: Standard loop of pull chain extends approximately 6 feet below the chain wheel. Custom lengths are available.

* Half-full rating is an indication of capacity for tilting an unbalanced, bottom-heavy drum. A partially full drum with unbalanced and shifting load is harder to tilt than a full drum.



Model 185A-GR

Steps to use Extra Heavy-Duty Kontrol-Karriers

1. Attach to your hoist hook using off-center lifting point so empty Kontrol-Karrier will hang plumb. Lift and move the Kontrol-Karrier to your upright drum.
2. Mate the Kontrol-Karrier's drum holder to the middle of your drum and secure your drum between drum ribs... no tools are needed.
3. Place the hoist hook in the lifting point above the drum center to lift Kontrol-Karrier with your secured drum.
4. Pull down one side of the chain loop while letting out the other to turn your drum. Chain loop provides control of drum tilt 360° in either direction, even while drum is hoisted above your reach.

Options and Accessories

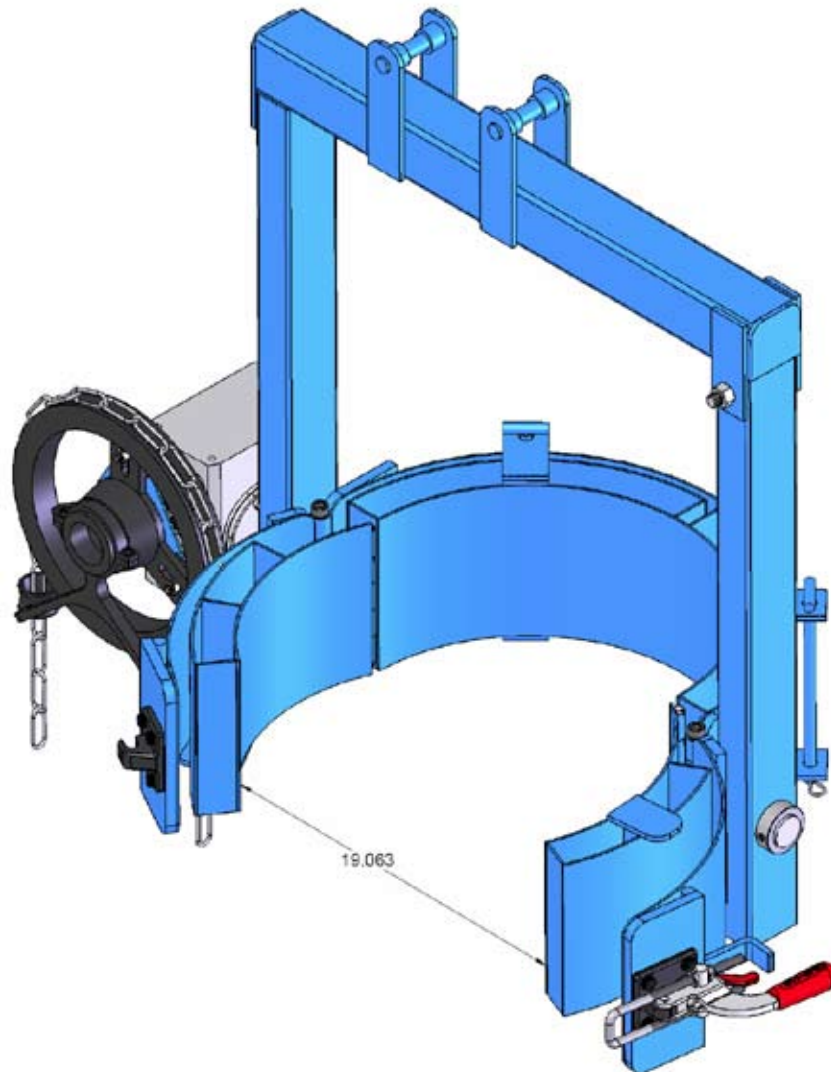
- **Option X03-185GR** - 10" Hand Wheel with speed handle. Replaces the standard chain wheel with hand wheel to turn the drum.
- **Model 55/30-19GR** Diameter Adaptor. Simply insert this Diameter Adaptor into the drum holder to handle your 19" diameter 30-gallon steel drum (image on side 2). Remove the Adaptor to handle your 55-gallon steel drum. Quickly and easily install this Diameter Adaptor in the drum holder. Then simply lift it back out to go back to handling a 55-gallon steel drum.
- **Option 461-P Counter Weight** to keep your Extra Heavy-Duty Kontrol-Karrier level, even with a drum in the holder.



| Model # | Description | 19" Adaptor | Unit Wt. | Ship Wt. | Ship Dimensions | Ship Class |
|----------|--|-------------|----------|----------|-------------------|------------|
| 185A-GR | Extra-Heavy-Duty Kontrol-Karrier, drum holder with load binders | 55/30-19GR | 162 Lb. | 177 Lb. | L 42" W 42" H 15" | 77.5 |
| 185G-GR | Extra Heavy-Duty Kontrol-Karrier, 3-piece drum holder | 55/30-19GR | 182 Lb. | 197 Lb. | L 42" W 42" H 15" | 77.5 |
| 185GM-GR | Extra Heavy-Duty Kontrol-Karrier with spark resistant parts, 3-piece drum holder | None | 182 Lb. | 197 Lb. | L 42" W 42" H 15" | 77.5 |

Model 185G-GR Extra Heavy-Duty Kontrol-Karrier with 3-piece drum holder, shown with model 55/30-19GR Diameter Adaptor for 19" diameter drum installed.

MADE
IN
USA



Please contact your Morse dealer