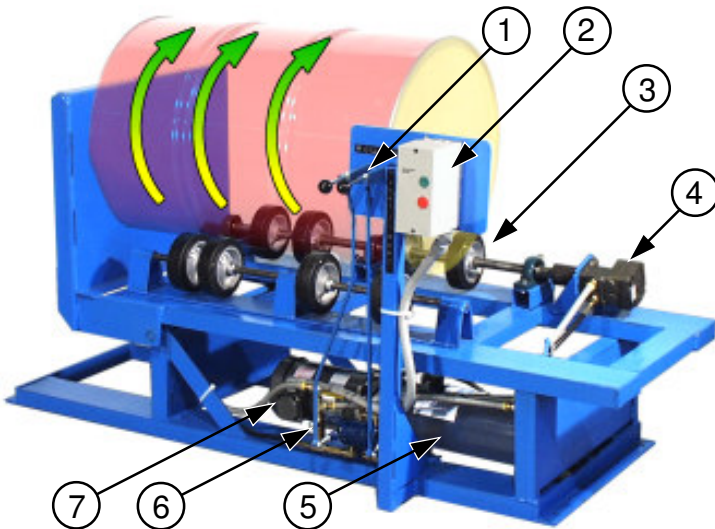


- Save time, labor and money
- Mix and blend in a closed drum
- Remix settled ingredients
- Eliminate transfer and clean-up
- Drums make economical vessels
- Use a separate drum for each batch
- No container to purge between batches
- Nothing to insert into drum

Built-In Hydraulic System Positions Drum For Rotation



1. Valve handles for control of rolling and load/unload
 2. Start/Stop control for system motor
 3. Eight 6" (15.2 cm) neoprene wheels, adjustable for various size drums
 4. Hydraulic motor driven by pump, rotates the drum
 5. Hydraulic pump, operates roll and tilt, driven by system motor
 6. Variable speed control knob
 7. System motor, 1 HP
- Capacity: 1,000 Lb. liquid load, 400 Lb. dry load
 - Roll Steel Drum: 6" to 26" diameter, 40" maximum length
 - Ship Dimensions: L 73" x W 38" x H 41"
 - Accepts 1 to 5 gallon Can Idler: Morse Model 1-5-1

Mixing In Closed Drum Means Less Hazards

Using a Morse Rotator eliminates spillage, splashing of dangerous contents on workers, and risk of contamination. Now you can get the benefits of mixing inside closed shipping drums and have the machine do the work of loading and unloading itself! Morse 456 Series models accept the drum upright. The user controls hydraulic tilting action that puts the drum down on the rotator wheels. A second valve allows the operator to start and stop the hydraulic motor that drives rotation. Minimum time, labor and operating cost is achieved by eliminating extra moves required for getting drum into mixing position. Various sized drums with up to 1,000 Lb. (454 kg) of liquid can be rolled at speeds of 5 to 20 RPM. Roll dry load up to 400 Lb.

456 Series Hydra-Lift Rotator Models

Model #	Motor Style	Volts	Hz *	Phase	Weight
456-1-115	TEFC	115	60	1	616 Lb.
456-1-230	TEFC	230	60	1	616 Lb.
456-3-230	TEFC	230	60	3	616 Lb.
456-3-460	TEFC	460	60	3	616 Lb.
456-3-575	TEFC	575	60	3	616 Lb.
456-A	Air Motor				599 Lb.
456-E1-115	Explosion Proof **	115	60	1	616 Lb.
456-E1-230	Explosion Proof **	230	60	1	635 Lb.
456-E3-230	Explosion Proof **	230	60	3	616 Lb.
456-E3-460	Explosion Proof **	460	60	3	626 Lb.
456-E3-575	Explosion Proof **	575	60	3	616 Lb.
POLY-456	Option to Roll Plastic Drum (Details on side 2)				30 Lb.

* AC Models are available with 50 Hz motors, however, expect a 20% reduction in RPM of drums. For 50Hz version, add "-50" to end of model number.

** Explosion Proof Motors are rated for Class I Group D, and Class II Groups F and G

Easy to Load and Unload Drum with Hand Truck or with Hoist



Model 160-WP 4-wheel drum truck with pneumatic wheels provides a simple means to load and remove drums.



Hoist equipped with Morse Below-the-Hook lifters makes loading and unloading easy. Model 90 is shown.

Powered Tilt



The built-in hydraulic system takes the upright drum to the horizontal position for rolling.

Roll Drum at 5 to 20 RPM



Roll your drum from 5 to 20 RPM with the variable speed hydraulic drive.

Option to Roll a Plastic Drum

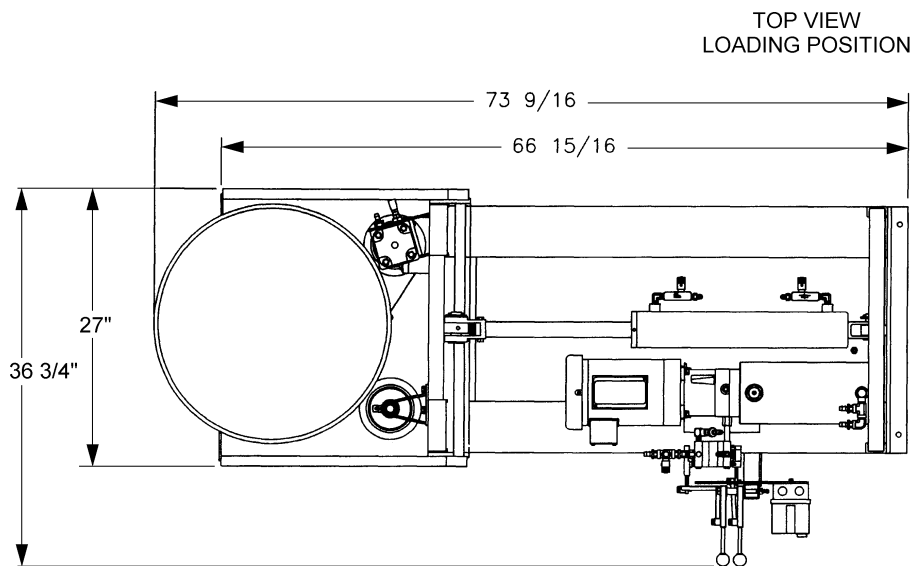
Option POLY-456 allows you to roll a plastic or steel drum on the same Hydra-Lift Drum Rotator. A soft-sided plastic drum requires more support and is prone to traveling while being rolled because it lacks the ribs and rims that are standard on a steel drum.

Option POLY-456 includes

- Extra wheels to support the flexible sidewall
- End stop to prevent the drum from traveling lengthways while being rolled

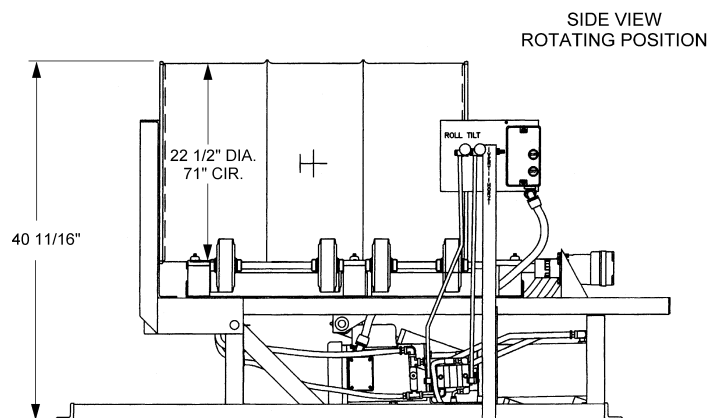
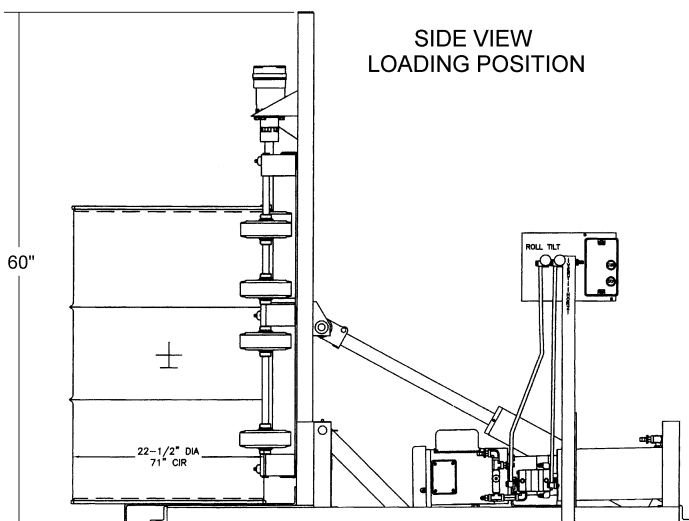


Dimensions of Hydra-Lift Drum Rotators



Install **Morse Rotators** in accordance with OSHA requirements for enclosure and interlock, etc. For OSHA compliance, see OSHA subpart O.1910.212 "General Requirements for all Machines" or contact Morse. Power connections and motor controls must comply with applicable codes.

MADE
IN
U.S.A.



MORSE MFG. CO., INC. • 727 West Manlius Street
P.O. Box 518 • East Syracuse, NY 13057-0518
Phone: 315-437-8475 • Fax: 315-437-1029
E-mail: nicepeople@morsemfgco.com
Website: www.morsemfgco.com

Please contact your Morse dealer: