

Automatically Holds Drum in Position... So You Don't Have To

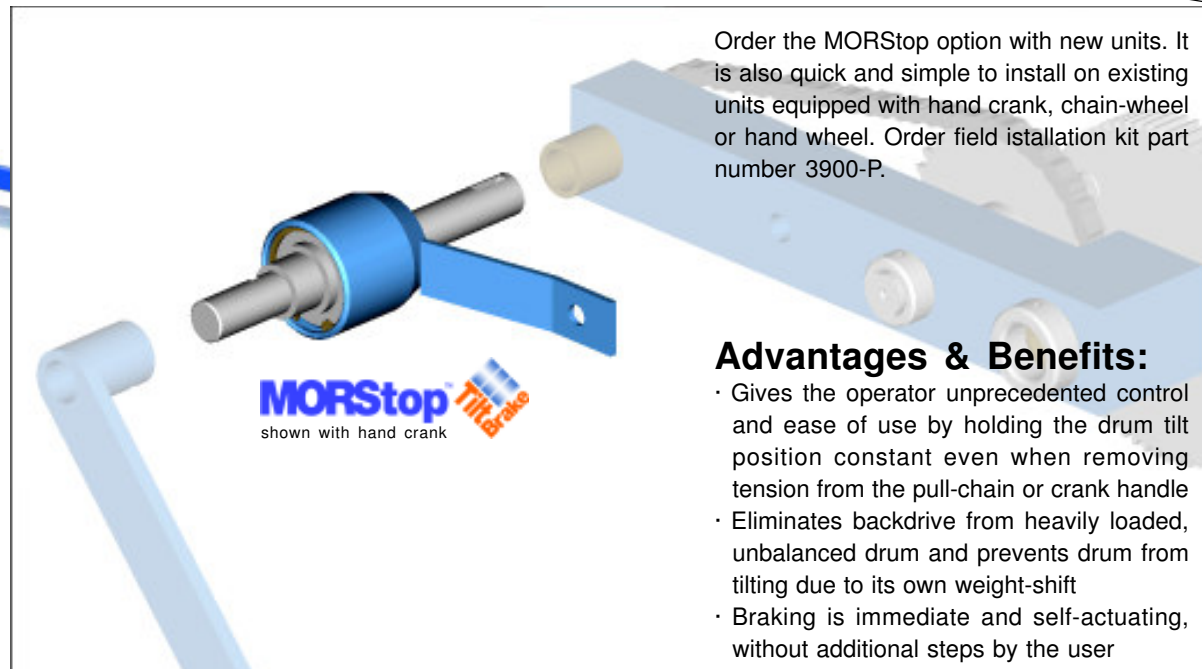
- Adds Automatic "Self-Stop and Hold" to drum tilting!
- Now get even greater ease of use and improved control!
- Available for field installation on existing Morse Karriers!

MADE
IN
U.S.A.



What is the MORStop Tilt-Brake?

When dispensing a heavy drum, especially an unbalanced drum, operators may need to manually lock the pull-chain or crank handle to prevent unwanted drum rotation. The unique MORStop Tilt-Brake mechanism automatically stops and holds the drum tilt angle! It is a simple, compact anti-backdrive device which functions smoothly and quietly in both directions. The MORStop Tilt-Brake option is available on many models in the Morse Drum Karrier Series and also fits any manual tilt product using a Morse style gear block.



Order the MORStop option with new units. It is also quick and simple to install on existing units equipped with hand crank, chain-wheel or hand wheel. Order field installation kit part number 3900-P.

Advantages & Benefits:

- Gives the operator unprecedented control and ease of use by holding the drum tilt position constant even when removing tension from the pull-chain or crank handle
- Eliminates backdrive from heavily loaded, unbalanced drum and prevents drum from tilting due to its own weight-shift
- Braking is immediate and self-actuating, without additional steps by the user
- Braking action works in either forward or reverse tilt-direction

MORStop Tilt-Brake fits:

MORSE 400 Series Hydra-Lift Drum Karriers: shown above left on Model 400A-60 with hand crank and optional gear covers.

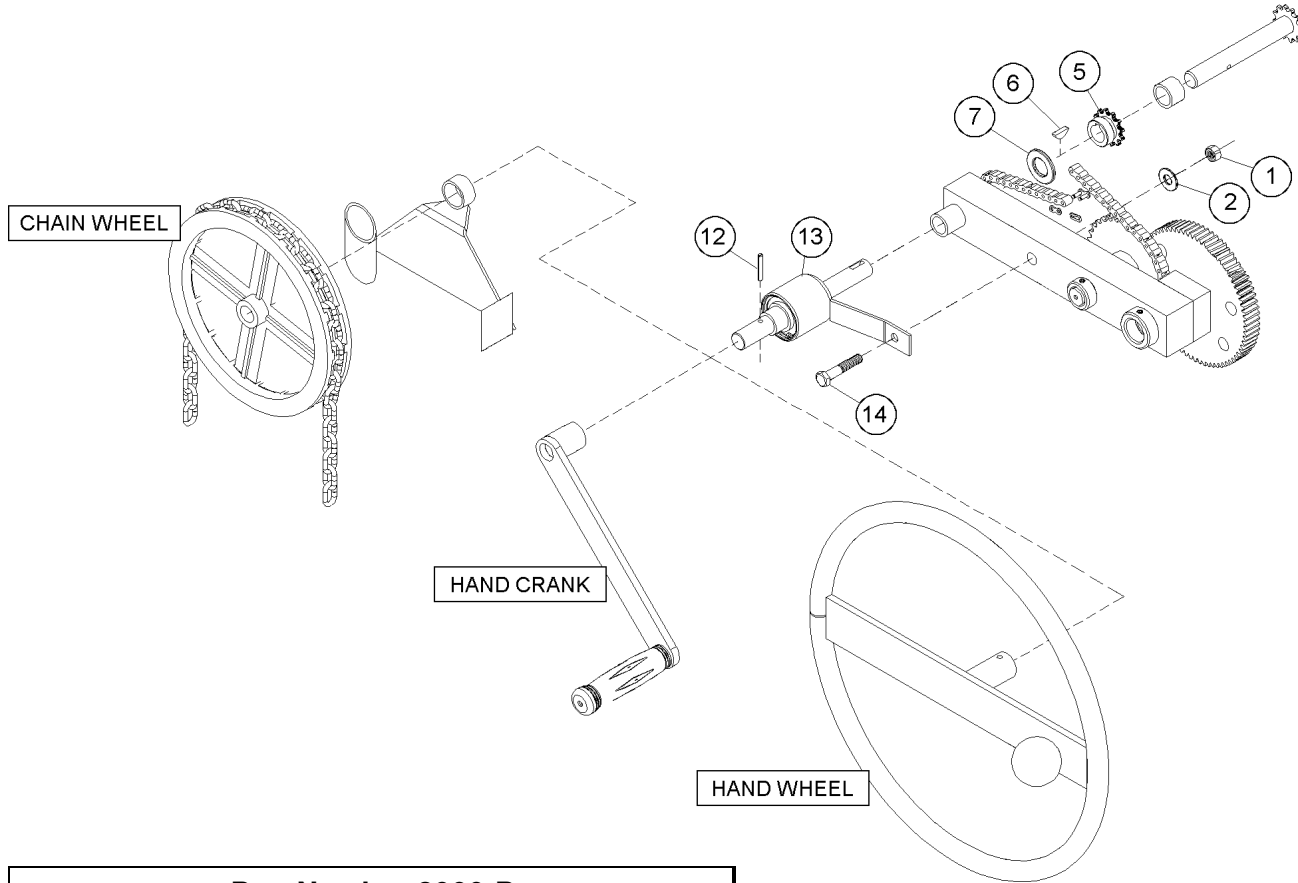
MORSE 285 Series Fork Lift-Karriers: shown left on Model 285A with chain wheel and optional gear covers.

MORSE 185 Series Below Hook Kontrol-Karriers: shown right on Model 185A with chain wheel and optional gear covers.

Any manual tilt product using a Morse style gear block



Order MORStop Tilt-Brake with new units...
 ...or to install on your existing Morse Karrier, order installation kit part number 3900-P.
 Install on your Morse Karrier with chain wheel, hand crank or hand wheel drum tilt control.



MADE
IN
U.S.A.

Part Number 3900-P

**MORStop Tilt-Brake Kit for field installation
 includes these parts**

ITEM #	QUANTITY	PART #	DESCRIPTION
1	1	1169-P	3/8 - 16 REV HEX LOC NUT
2	1	1166-P	WASHER, 3/8 USS 1" OD
5	1	11-P	SPROCKET, #35 12T, 3/4" BORE
6	1	735-P	KEY, WOODRUFF, SIZE 9, ASA606
7	1	55-P	WASHER, 3/4 SAE FL 1-1/2 OD
12	1	64-P	ROLL PIN, 3/16 X 1-1/4
13	1	3901-P	MORStop TILT BRAKE
14	1	82-P	3/8 - 16 X 2-1/4 HHCS GR 2

MORSE MFG. CO., INC.

727 West Manlius Street
 P.O. Box 518
 East Syracuse, NY 13057-0518
 Phone: 315-437-8475
 Fax: 315-437-1029
 Email: nicepeople@MORSEmfgco.com
 Website: www.MORSEmfgco.com

Please contact your Morse dealer: